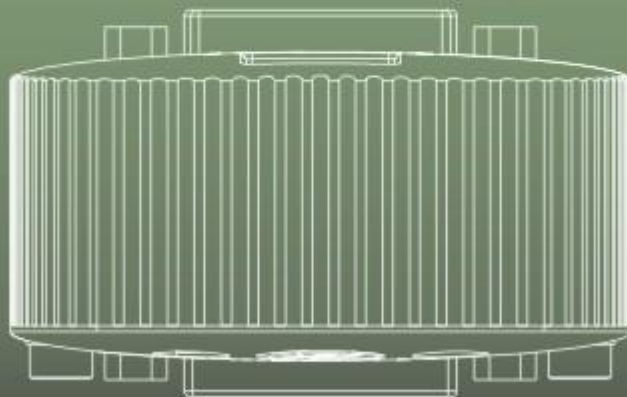


Parrot Trainer User Manual



Contents

Contents	2
Welcome	3
Introduction	3
Platforms	3
Help Help	3
Support	3
What's New	4
V1.0.7	4
V1.0.6	4
V1.0.4	4
V1.0.3	4
V1.0.1	4
V1.0	4
Parrot Overview	5
Device Features	5
Ports	5
Spoof EDID button and LED	5
Pass-through mode	5
Spoof mode	5
Recording EDID settings of a display without using the Parrot Trainer Software	5
Parrot Trainer Overview	6
Toolbar	6
File Operations	6
Parrots	6
Squawk!	6
Spoof EDID	6
Read Parrot	7
Read Monitor	7
Teach Parrot	7
EDID Summary window	7
Creating a New EDID	8
Learning from Monitor	10
Reading from a Parrot	11
Editing Resolutions	12
Teaching the Parrot	14
Loading and Saving EDIDs	15
Advanced Features	16
Parrot Report	16
Troubleshooting	17
None of the Above?	17
Software release notes	18
Release Notes	18
Glossary	19

Welcome

Introduction

Welcome and thank you for using version v1.0.7 of the DVI Parrot Trainer EDID management software.

Platforms

DVI Parrot Trainer is designed to run on Microsoft Windows 7 (32 Bit and 64 Bit), Vista or XP or Apple Macintosh OS-X (10.5.x or later - Intel only) personal computers.

Help Help

This is the PDF version of the on-line Help and it is available in various formats for printing. The on-line version, which has the advantage of being fully searchable and includes animated tutorials, can be opened from within Designer using Help > Contents on the main toolbar.

Support

As with all successful control products, support is crucial and we will do everything possible to ensure that your project is a success. Please do not hesitate to contact us with your questions, bug reports and suggestions.

Contact your local TMB office or email support@dvi-parrot.com

Please also visit our website to keep up to date with the latest product news and software releases: www.dvi-parrot.com.

What's New

V1.0.7

- Improvement to summary display when removing extension resolutions
- Minor Bug fixes

V1.0.6

- Parrot Report functionality added to File menu
- Firmware of Parrot shown by hovering over Combo box

V1.0.4

- Allow non integer refresh rates to be entered
- Mac OS performance improvements

V1.0.3

- Chinese language available for machines running the chinese language
- Extensions page is now editable
- Help updated

V1.0.1

- Windows 64-bit support
- 'New EDID' dialog redesigned providing greater choice of resolutions
- User Interface Improved on Detailed Timing tab
- Parrots can be renamed (right click on serial combo box)
- Unsaved changes warnings added
- Trainer reloads last EDID file
- Help updated

V1.0

- This is the initial release of Parrot Trainer.

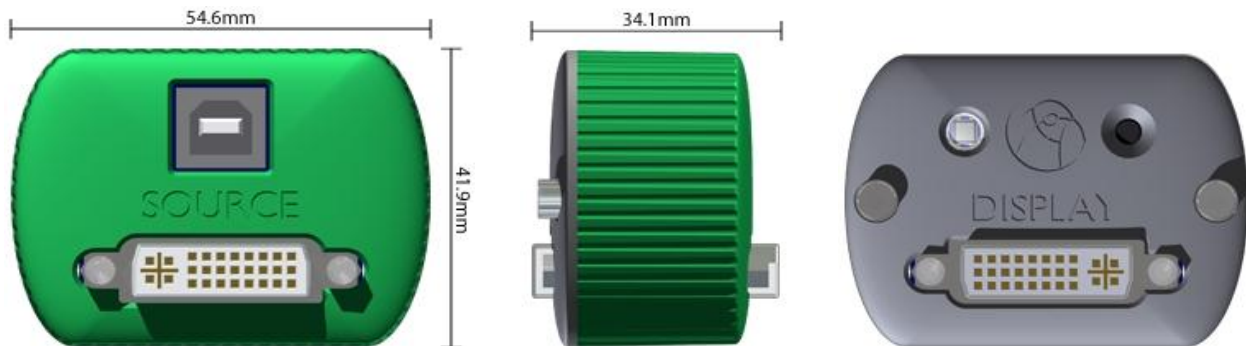
Parrot Overview

Device Features

Ports

The DVI Parrot has three ports:

- The USB connector allows the Parrot to link to the Parrot Trainer software
- The Source DVI port receives input signals
- The Display DVI port forwards chosen resolution settings to an output device



Spoof EDID button and LED

The Spoof EDID button and associated LED are located on the display side of the Parrot. The button allows the parrot to switch between two modes:

Pass-through mode

Outputs the default EDID of the input source. The LED becomes **blue** for Pass-through Mode.

Spoof mode

Forces the EDID to switch to a user defined resolution. The LED becomes **green** to indicate Spoof Mode

Recording EDID settings of a display without using the Parrot Trainer Software

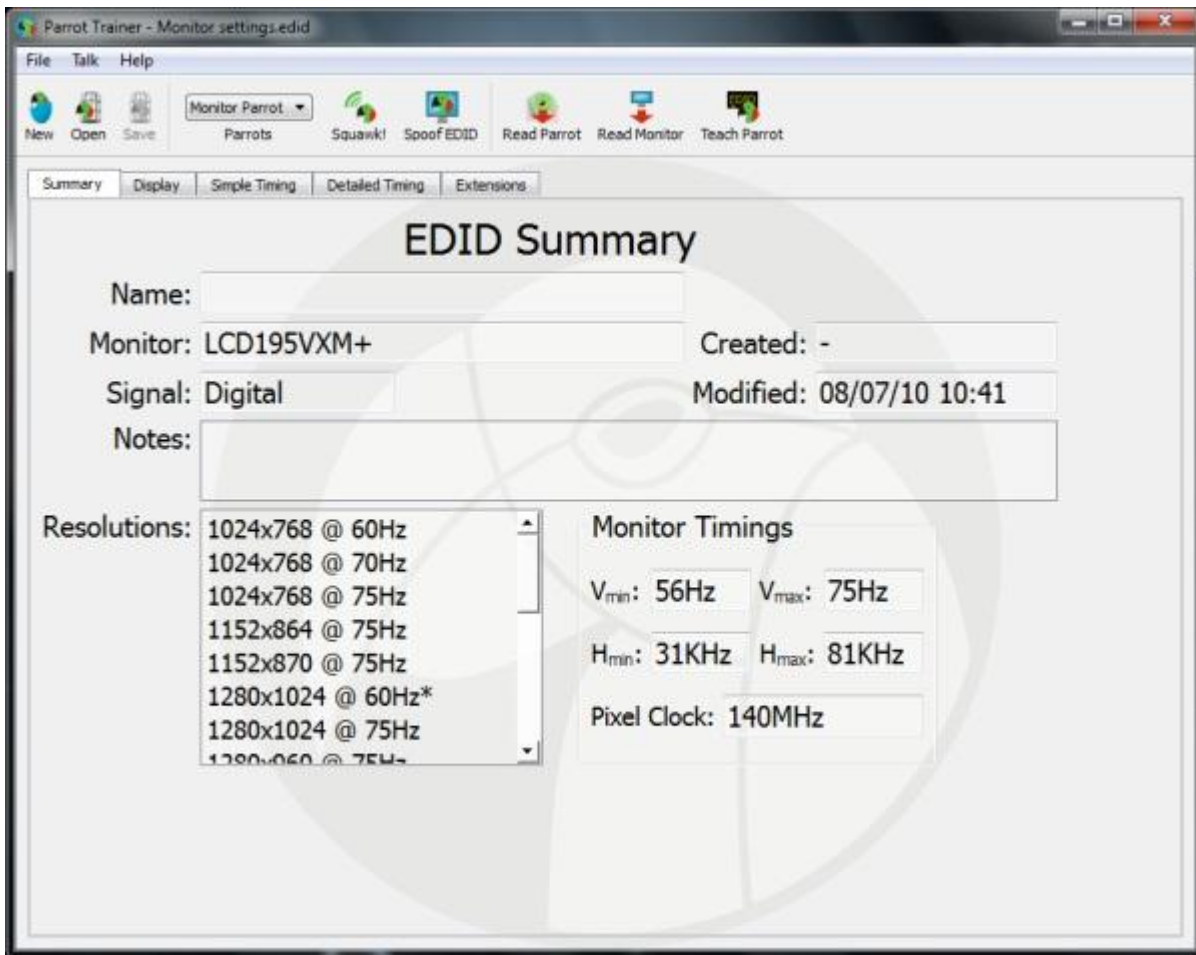
To capture the EDID settings of a display using just the Parrot device, press and hold the Spoof EDID button. After 3 seconds the LED will flash between green and off repeatedly. This indicates that the EDID settings of any connected display has been stored in the Parrot.

Parrot Trainer Overview

The Parrot Trainer application writes EDID settings to the Parrot and feeds back to the user from the device. It runs in either the English or Chinese language depending on the language setting of the machine it is installed on. The majority of users will not need more than the Summary page to prepare a Parrot for use.

Toolbar

All commands are displayed on the application toolbar:



File Operations

The New icon can be used to create new EDID settings through checking appropriate resolution presets or through defining a custom resolution. These EDIDs can then be saved and reloaded using the Open and Save buttons.

Parrots

The Parrots drop down allows a Parrot to be selected from any number of devices that appear as connected to the system over USB. Parrots are identified by their serial number. **Hover** over a Parrot for the firmware version to be reported. **Right click** a selected Parrot to rename it.

Squawk!

Squawk! causes the LED on the Parrot to pulse blue. This acts as a test for connectivity and identification.

SpooF EDID

SpooF EDID allows toggling between the device being in [Pass Through Mode](#) and [SpooF Mode](#).

Read Parrot

Read Parrot displays the current settings on the Parrot in the EDID summary window.

Read Monitor

Read Monitor displays the monitor's supported resolutions in the EDID summary window.

Teach Parrot

Teach Parrot writes the current EDID resolutions displayed in the summary window to the Parrot.

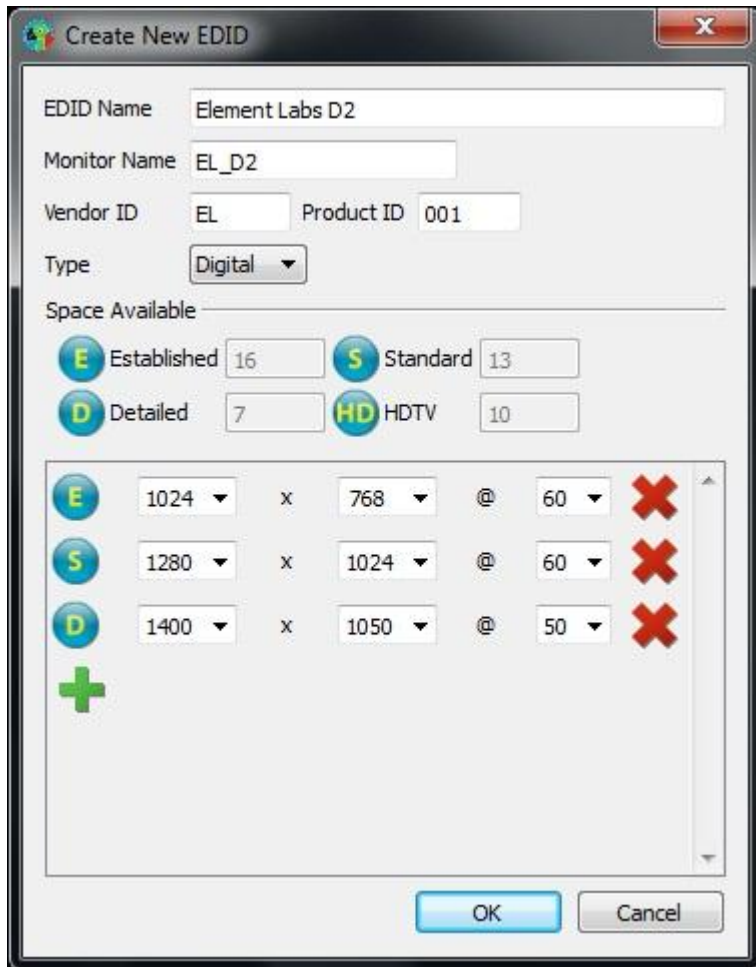
EDID Summary window

The EDID Summary displays current EDID settings. These are either:

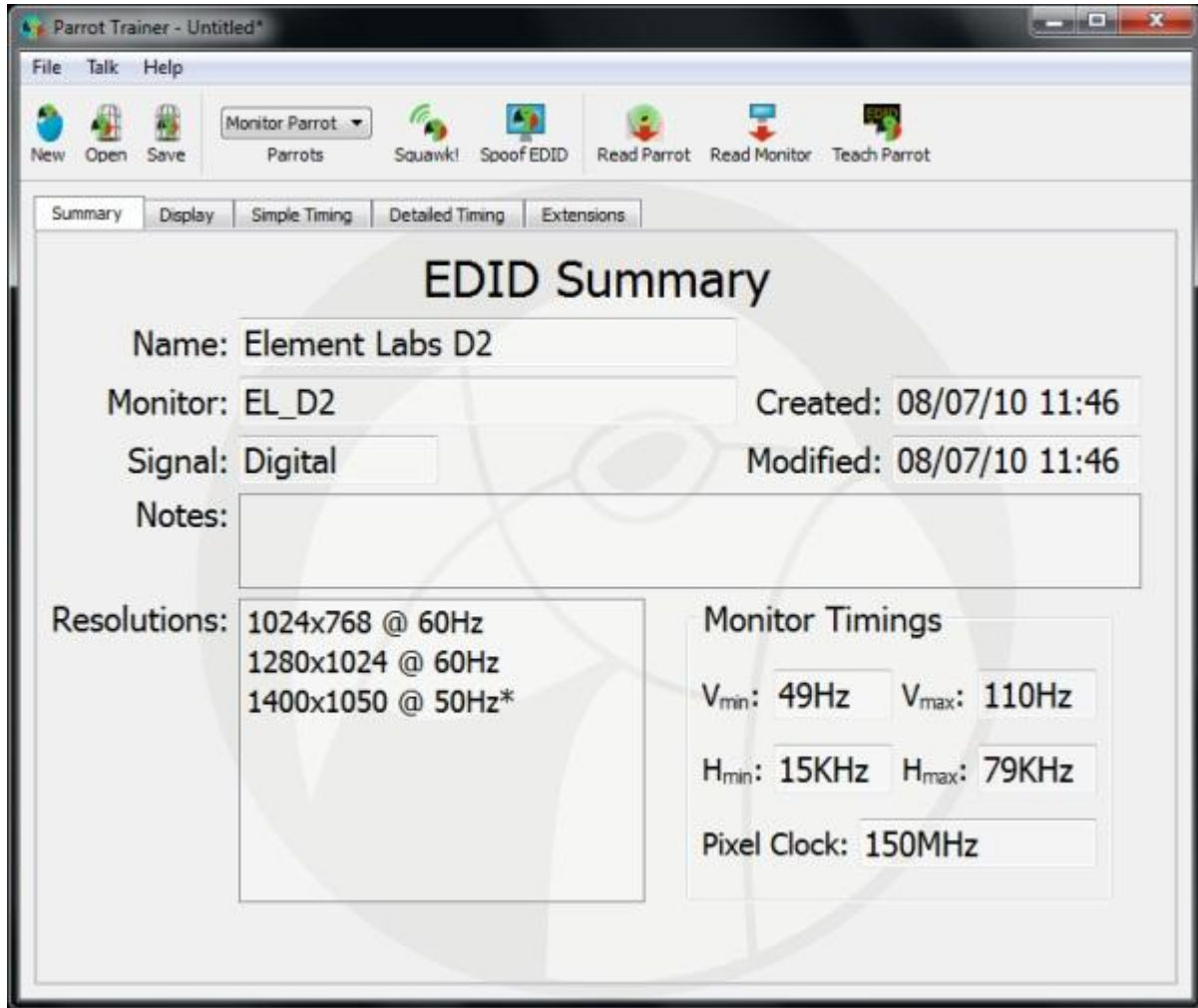
- The latest settings created from 'New'
- The last settings read from a Parrot
- The last settings read from a Monitor

Creating a New EDID

The simplest way to create EDID settings is through the 'New' icon. The Create New EDID dialogue allows digital and analogue Resolution Presets to be specified. Resolutions can be chosen from the drop-down lists or they can be typed into the boxes.



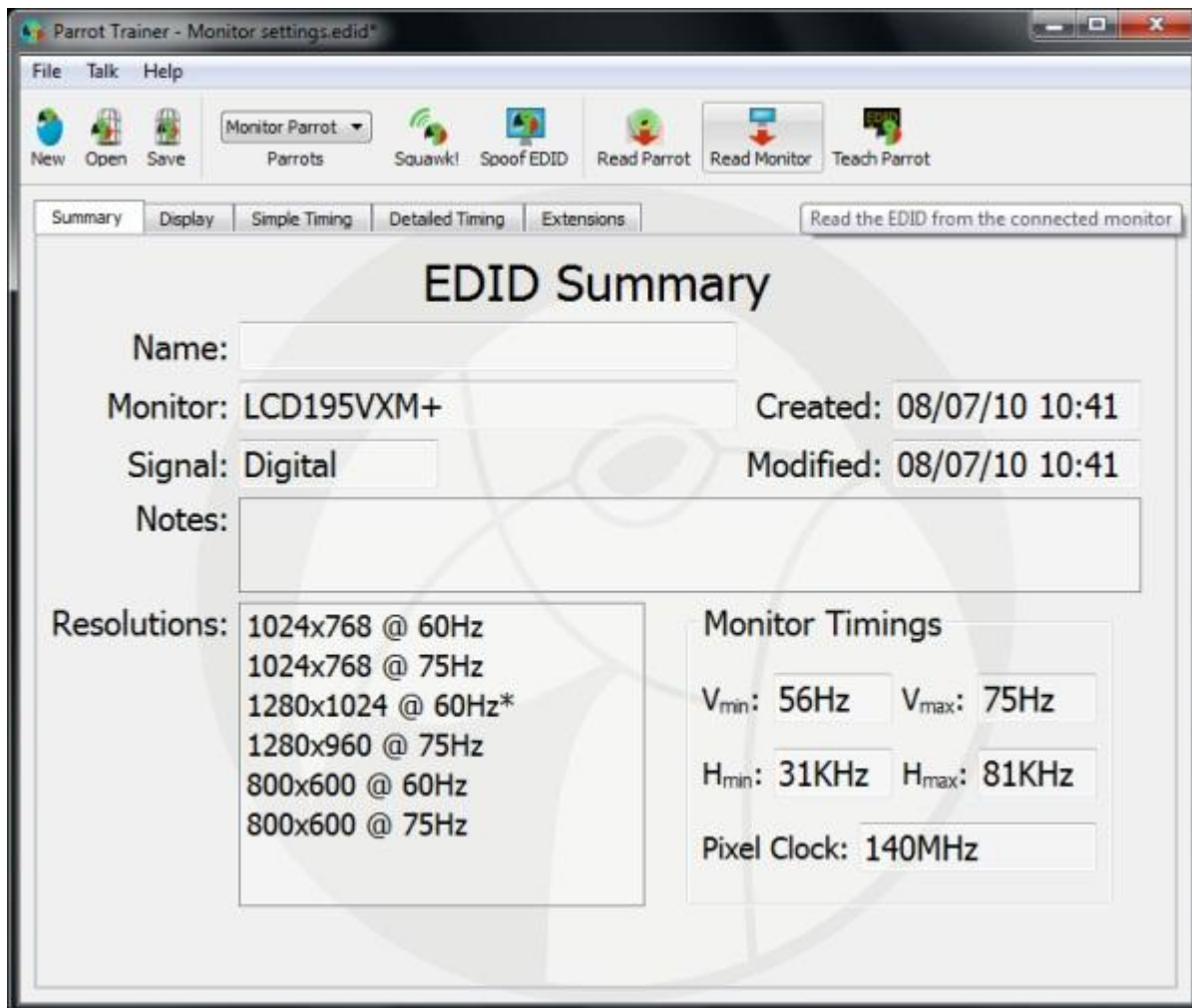
When selection is complete, clicking OK allows chosen settings to be displayed in the summary window. The settings are then ready to be [edited](#) or [taught](#) to a Parrot.



Learning from Monitor

To read EDID settings from a Monitor, attach the monitor via a DVI-D cable to the Display port of the Parrot. Ensure that the required Parrot is selected and click the **Read Monitor** icon on the toolbar.

The Monitor's supported EDID settings are then displayed in the Summary window as indicated below.

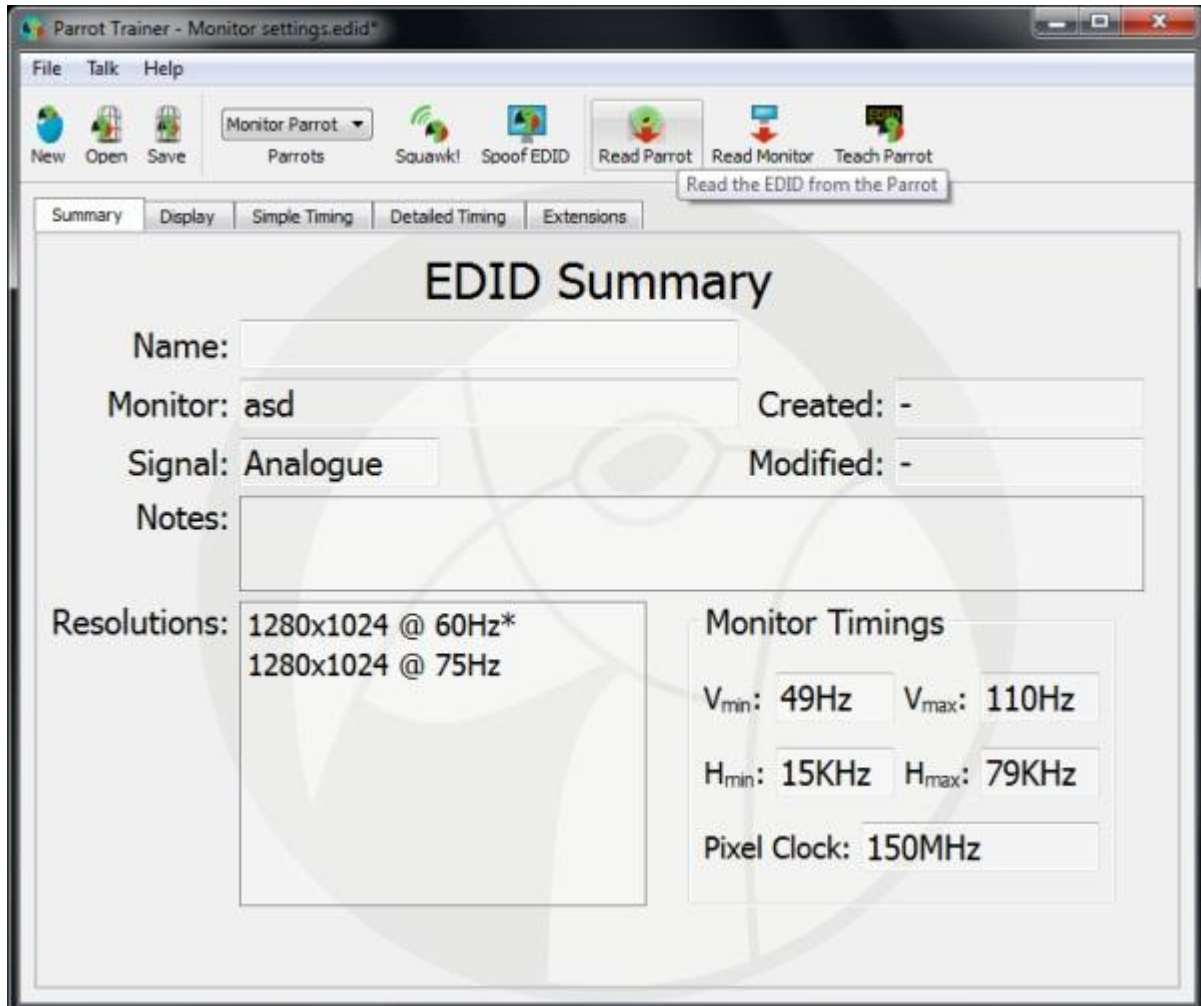


The resolutions can then be [edited](#) or [taught](#) to a Parrot.

Reading from a Parrot

To read EDID settings from a Parrot, connect the Parrot via a USB cable to the computer. Ensure that the correct Parrot is selected and click **Read Parrot**.

The Parrot's current EDID settings are then displayed in the Summary window as indicated below:



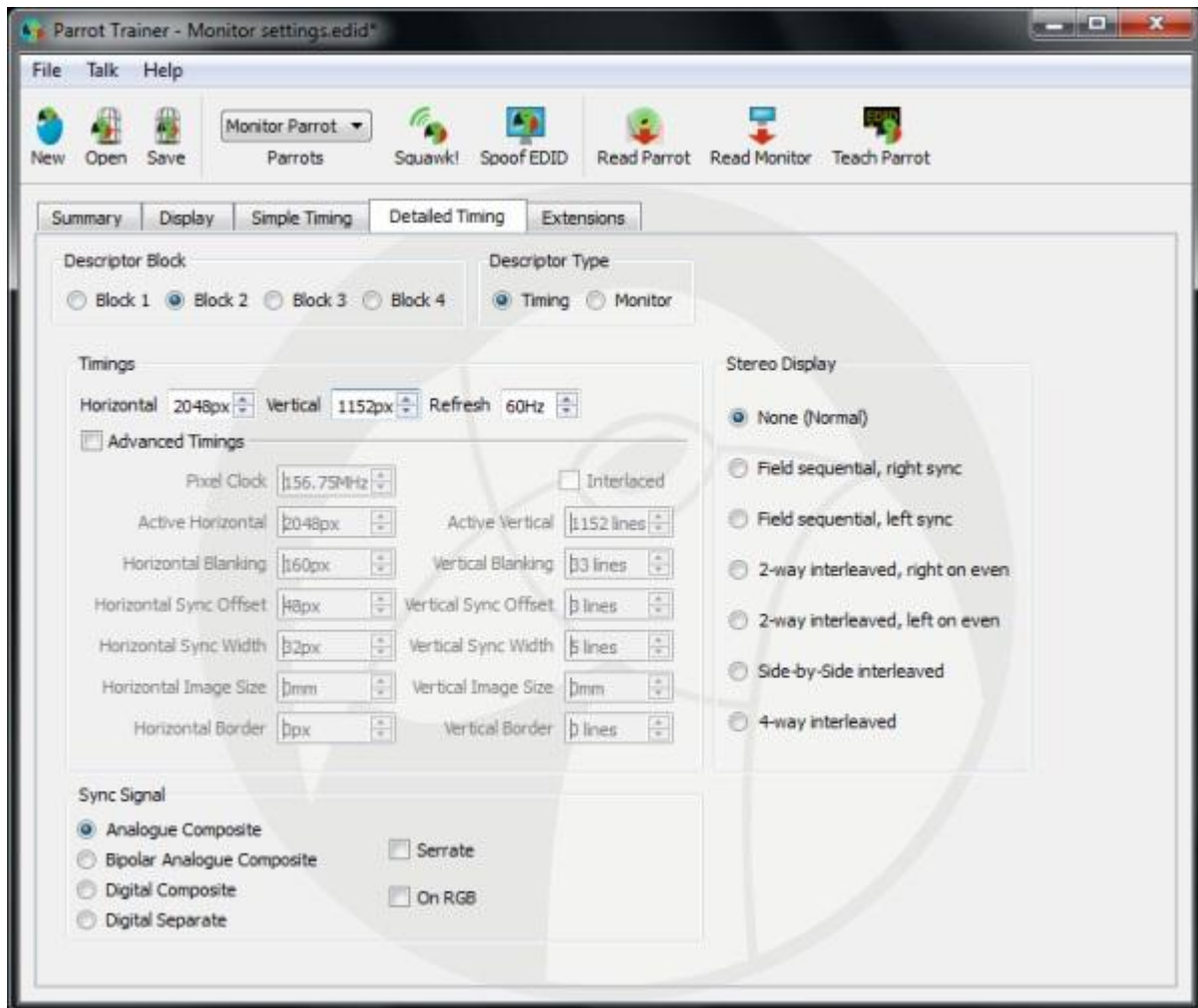
The resolutions can then be [edited](#) or [taught](#) to a Parrot.

Editing Resolutions

To edit new or captured EDIDs, the 'Simple Timing' and 'Detailed Timing' tabs can be used. The Simple Timing tab, shown below, allows for the adjustment of Established and Standard resolutions:



Detailed resolutions can be adjusted through use of the Detailed Timing tab. Descriptor Block 1 is always set to the native resolution (marked with an asterisk on the Summary page) and can be adjusted. Additional Descriptor Blocks can be set to 'Timing' under Descriptor Type and further custom resolutions can be defined. If necessary properties of these resolutions can be adjusted further by checking the 'Advanced Timings' checkbox.



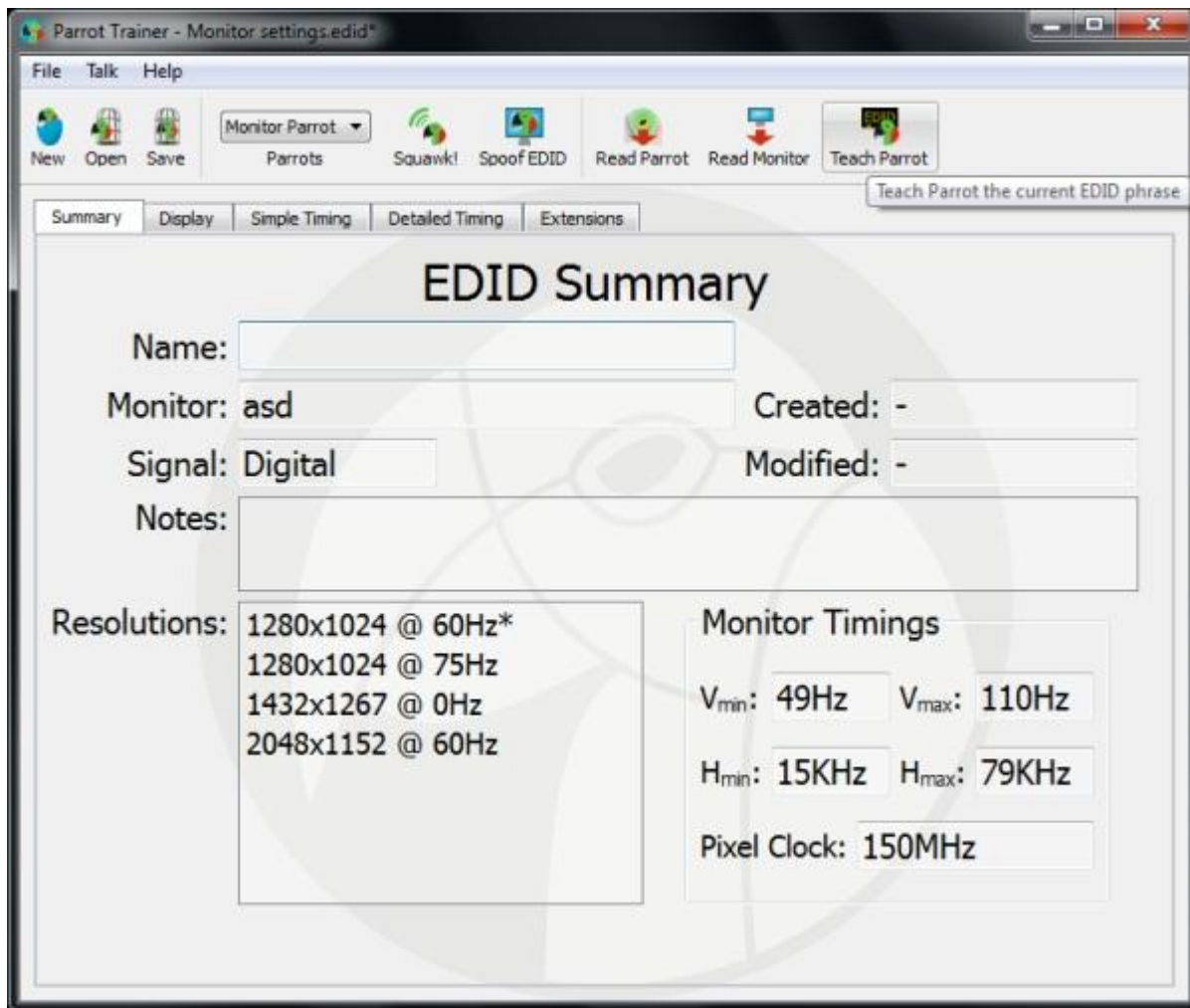
After editing is complete, resolutions can be reviewed through the Summary tab and then [taught](#) to a Parrot.

Teaching the Parrot

To teach EDID settings to a Parrot, connect the Parrot via a USB cable to a computer. Ensure that the resolutions listed in the EDID summary are the required resolutions. Check that the required Parrot is selected and click **Teach Parrot**.

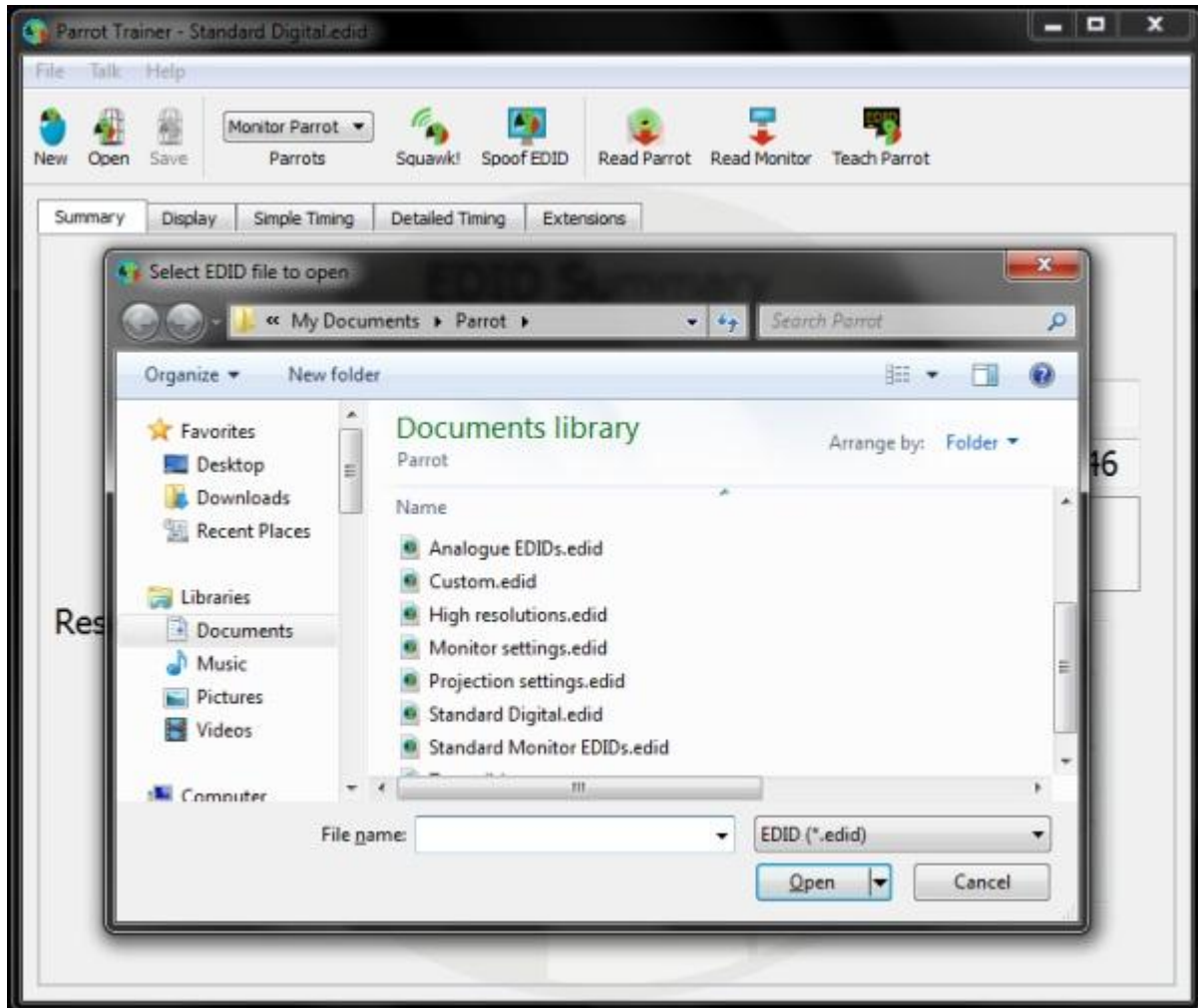
Note: For analogue signals the Parrot has to be power cycled for the settings to take effect.

The Parrot's current EDID settings are then displayed in the Summary window below:



Loading and Saving EDIDs

EDID settings can be saved or recalled at any time. Once the EDID settings are displayed in the Summary window as required, select Save and choose a filename:

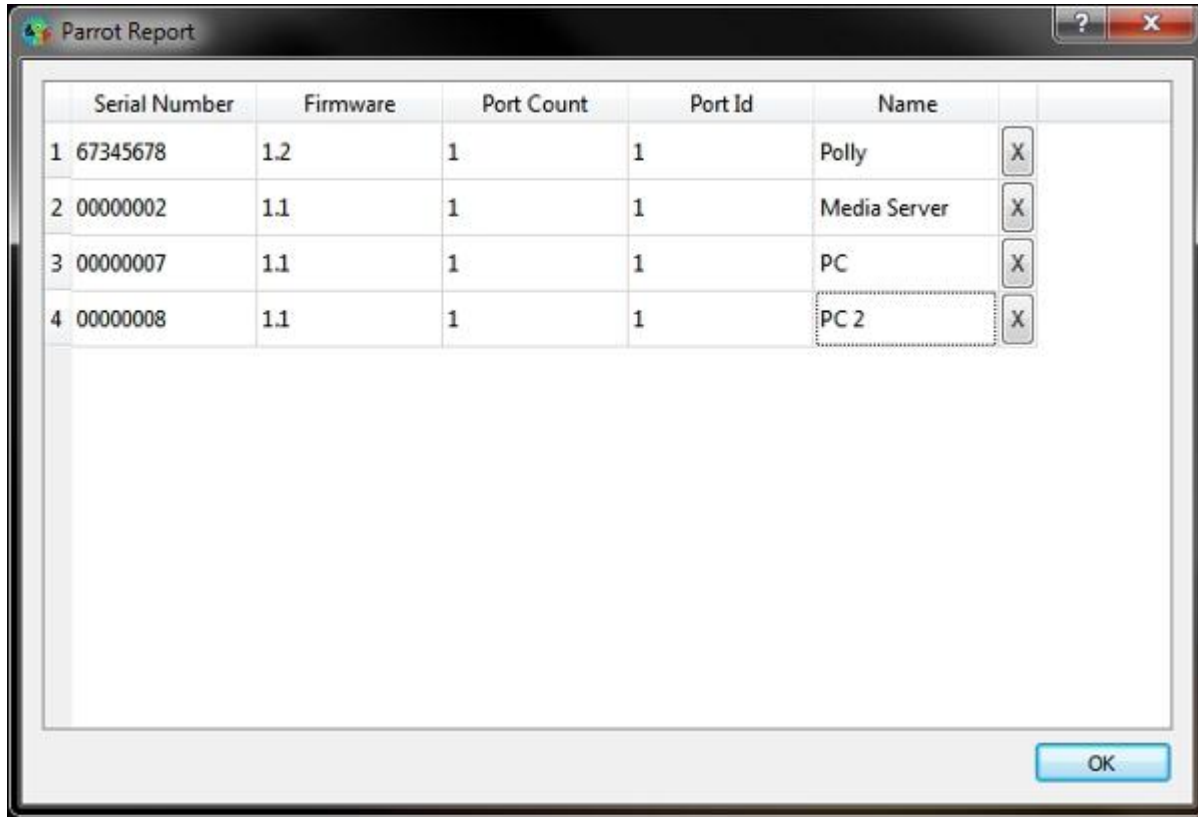


EDID settings can be loaded by clicking the Open icon and selecting the required file.

Advanced Features

Parrot Report

The Parrot Report is accessible from the File menu of Parrot Trainer:



The report lists connected Parrots by the order in which they were detected and the Firmware which each is running. Double clicking on the Name field allows a name for each Parrot to be entered. The 'X' button resets a Parrot's name to its serial number.

This section of the manual is under development. If you have suggestions for features needing documentation then please contact [Support](#)

Troubleshooting

The following section lists common questions and problems with their solutions:

Q: Where can I get the drivers for Parrot from?

A: The Parrot Trainer software includes the drivers and is available for both windows and mac from dviiparrot.com

Q: The Parrot was connecting fine to the Parrot Trainer, but is now coming up as an unknown USB Device.

A: Disconnect the Parrot. Go to Device Manager and uninstall Parrot's drivers. Reconnect Parrot via USB and the drivers will reinstall.

Q: Parrot will not take the Analogue settings I teach it.

A: The Parrot must be power cycled for analogue settings to take effect

Q: Can the Parrot be used to force 50Hz and not the 60Hz that is the minimum today on a Windows machine?

A: Yes - when you create a new EDID, just select the 50Hz mode and the Windows machine will be forced to use them.

None of the Above?

Contact [support](#), please be prepared to send in your EDID file.

Software release notes

Release Notes

These are provided with the installation Readme file.

Glossary

E

EDID

Extended Display Identification Data

P

Parrot

1. Any of numerous tropical and semitropical birds of the order Psittaciformes, characterized by a short hooked bill, brightly colored plumage, and, in some species, the ability to mimic human speech or other sounds. 2. One who imitates the words or actions of another, especially without understanding them. 3. EDID Spoofer

